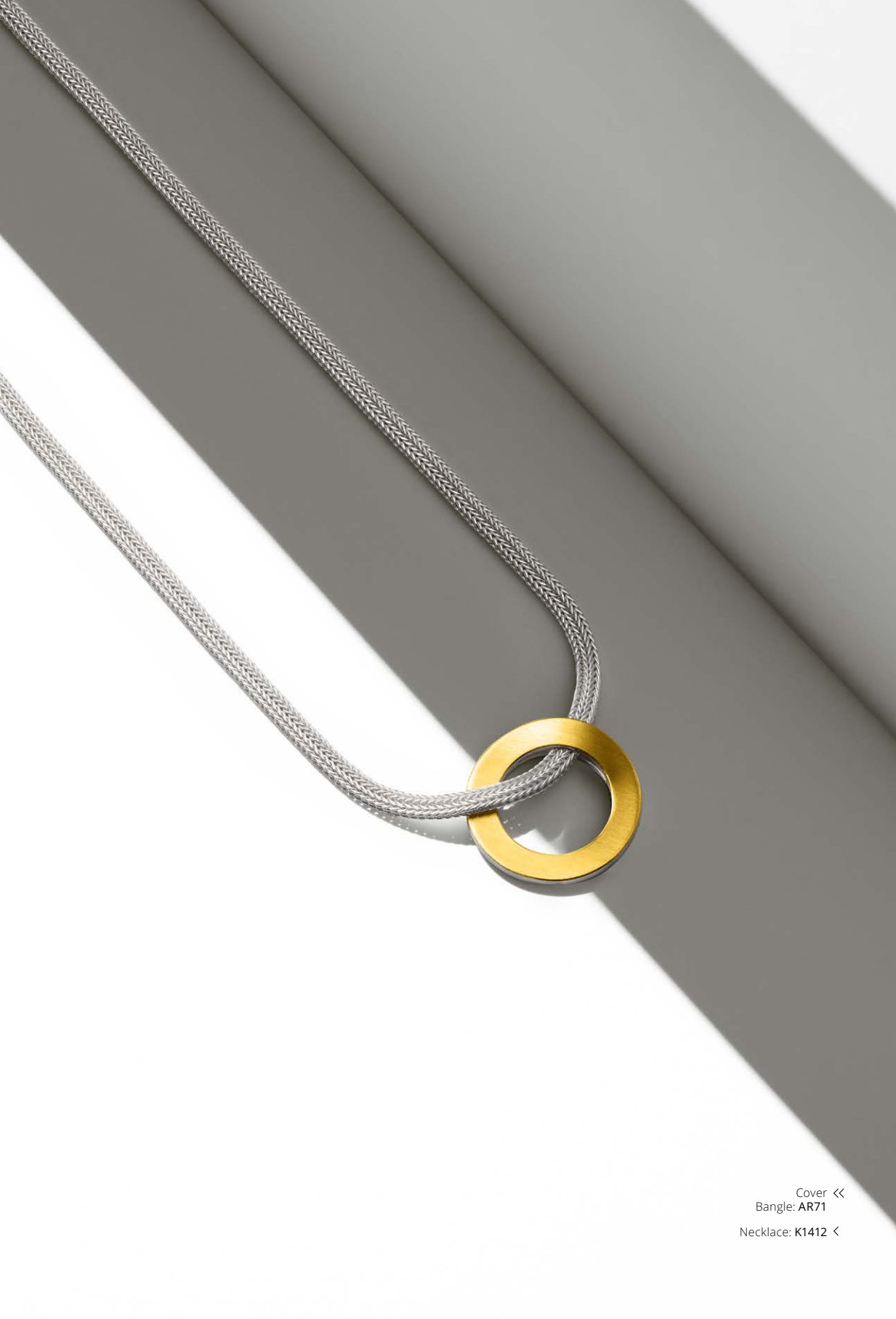




MANU



Cover <<
Bangle: AR71
Necklace: K1412 <

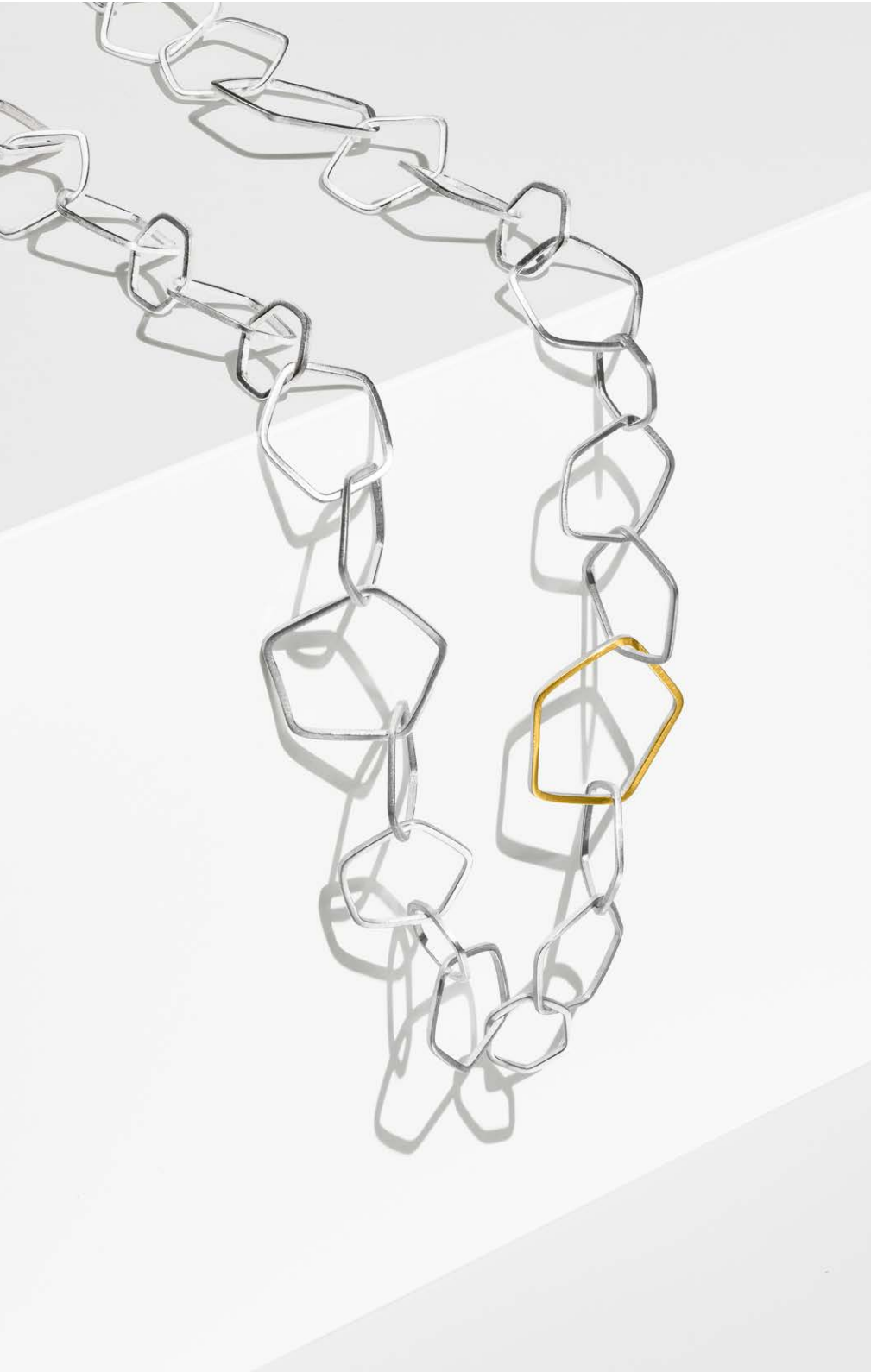
Silver. Gold. MANU.

MANU jewellery is crafted entirely by hand. Warm, bold and genuine. Taking a closer look, new approaches in shapes, structures and surfaces will become apparent – time after time. Combinations of silver and gold are produced in small runs, lending them an unique character. The craftsmanship is recognisable in all pieces of jewellery.

MANU does not use gold-plating techniques – MANU applies real gold in such a way that pieces of jewellery are created that endure a lifetime. The collection thereby focuses on different aspects: modern designs, timeless jewellery, pure gold and star jewellery.

Content

CLASSIC Collection	06
GOLD Collection	24
MODERN Collection	30
Star jewellery	46
Interchangeable clasps	50
By hand	20
Many signatures	28
Jewellery variations	44
Straightforward MANU	54
Imprint	58



CLASSIC. Collection.

The CLASSIC collection is playful without being pretentious. With its wide, organic surfaces, it is reminiscent of MANU as it was in the very beginning. CLASSIC does not represent the forgotten or the past, but rather an interplay of continuity and modernity. Twice a year, new designs are created, which also drive CLASSIC forward and complement it with current pieces of jewellery. Nevertheless, cherished classics remain.







< Bangle: AR111BR
Ring: R1349BR
> Necklace: K1445K
Ring: R871





MANU's designers find inspiration in different life situations and techniques. The interplay of simple geometric forms characterises this set. With its large surface it stands out but does not appear clunky

due to its natural structure. A golden circle accentuates each piece. It was designed by Hajo Delius, who, as the creative leader of the MANU team, creates jewellery pieces that encourage to rethink.

< Ring: R1330BR

> Necklace: K1452BR
Earring: O1003BR





Necklace: K1419BR <
Earring: O982BR
Ring: R1322BR
Rings from top: >
R1338 and R1253



Silver and gold move in opposite directions and yet hold each other tightly. Geometric shapes and perfect lines alternate with rolled structures on the silver surface. This mixture of straightness and naturalness makes this set exciting.



Necklace: K1456BR <

Bracelet: A205BR

Ring: R1360BR

Rings: >

R1224BR and R1130BR

R1178BR and R1031

R1002 and R1349BR





The colours and brilliance of a piece of jewellery are usually recognisable at first glance. Taking a closer look and discovering more details is what makes jewellery exciting. MANU plays with different surfaces and shapes. The combination of smooth, linear elements and organic rolling structures has a lively effect. Silver and gold intertwine dynamically. The structure of each piece of jewellery is always a little different due to the rolling process.



< Earring: O765
Ring: R1031

> Necklace: K1449BR
Ring: R1351BR
Earring: O999
Earring: O998BR



Its voluminous, organic surfaces bring the CLASSIC collection to life. In this set, two ovals are intertwined. Hidden inside them is a brilliant-cut diamond as a subtle highlight. Due to the curvature of the ovals, silver and gold embrace each other and form a balanced couple.



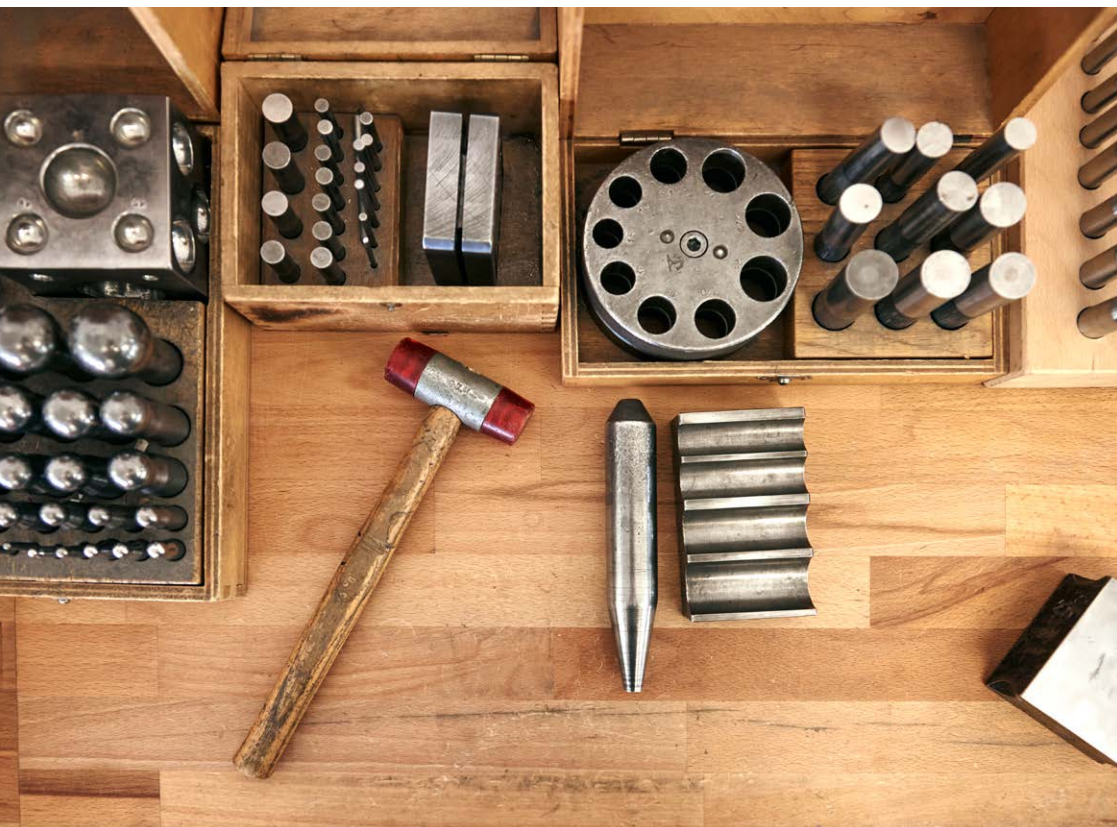
Rings left: <
 R1344TO, R1344MQ and R1344TL
 Rings right:
 R1344WTO, R1344AM and R1344LC

Rings: R1354TO, >
 R1354PR and R1354AM

Cold silver and warm gold. This contrast has been fascinating MANU since the very beginning. When colours are added, the goldsmith's fingertips in the workshop start to tingle. The two precious metals form the frame for the strong shades of real stones. MANU makes it possible to choose from a variety of natural stones for many different pieces of jewellery.



By hand. By MANU.



MANU, according to its Latin origin, stands for “hand”. Each piece of jewellery is created by hand by the experienced goldsmiths. In the workshop, the team files, hammers, presses, folds and punches their pieces of jewellery every day. With personal charm and delicate work. Each and every one of them attaches great importance to precision and consistent quality for the jewellery that is produced in small series. The result is jewellery in which the hand-crafted process is visible. No piece of jewellery is exactly like the other. The different variations of jewellery are also handmade

“At MANU we combine traditional craftsmanship with modern design. The result is something very individual with a lot of character.”



Anke Loose
Master Goldsmith

for each customer. The eight MANU goldsmiths take the necessary time to ensure that each piece of jewellery meets the high quality standards. All the stages of crafting a piece of jewellery are carried out by a single individual. For a single design, several hours can elapse until the final touch is achieved.





Hajo Delius
Master Goldsmith

“We create
jewellery
for people.
It is therefore
important to us,
both in personal
contact and in
the workshop,
to focus on
the wearer.”





At MANU we follow and pass on the traditional goldsmith's craft. Besides experienced master craftsmen like Hajo Delius, who has been with MANU since 1992, younger minds also learn and work here. They incorporate new ideas and designs into the overall concept – almost all designs in the collection are created by MANU goldsmiths. The personal environment and the close contact with MANU's customers also shape the work in the workshop. The team is happy to provide support when necklaces or other favourite pieces need to be replaced or renewed after many years of wear.

You can also gain an insight into the workshop and the work at MANU on Instagram at [@manu_schmuck](#) and on Facebook at [@manuschmuckwerkstatt](#). Here, the team shows how selected pieces of jewellery are created, how new collections are developed together, at which trade fairs MANU will be represented next and offers you a look behind the workbench.

GOLD. Collection.

The GOLD series stands out from the MANU portfolio. Pure 18-carat gold. A clear understatement. While the original combination with silver retreats into the background, gold assumes the leading role here. Always in reduced shapes. Lightweight and slim. GOLD strives for the new, yet at the same time, remains true to the MANU design concept.



Earring: GO23
Rings: GR29BR and GR29
Earring: GO23BR



Necklace: GK41BR <
Earring: GO24BR
Ring: GR32BR

Earrings: GO22 and GO23BR >
Rings: GR29 and GR29BR



A perfect shell hiding among countless others and endless grains of sand on the beach. A fossil that tells its own story, enclosed in an ancient rock. Equally natural and precious is this set from the GOLD collection, highlighted with a brilliant-cut diamond in 18-carat gold.



Necklace: K1433BR <

Ring: R1332BR

Earring: O992BR

Necklace: K1465BR >

Earring: O1010BR



One Design Language. Many Signatures.

MANU creates clear, calm designs, crafted entirely by hand. This is recognisable in all shapes and surfaces; it makes the jewellery look natural. Pure and warm. The collection features sterling silver and 22-carat gold as well as genuine diamonds and coloured gemstones. The different designers make MANU multi-

faceted. Each of them thinks differently and implements ideas in their creations in a different way. At the same time, they communicate in one design language, creating the overall picture all together: harmonious shapes and the combination of silver and gold have characterised MANU for more than three decades now.



Ralf Werner
Designer

Designer Ralf Werner embodies this ethos: as a free spirit and product designer, he lives for a reduced, timeless language of form. His designs are not emotionless, but move in a field of tension between simplicity and excitement. Ralf takes inspiration from his travels, finds ideas in architecture or new materials.

MODERN. Collection.

The MODERN series is guided by delicate, clear lines, and slender forms. More and more, these design elements define what MANU truly stands for. The collection does not follow every trend, but rather approaches a new side of MANU – for explorers and the young at heart. In their lightness, many of the jewellery pieces in the collection are suitable not only for special occasions, but also for any other day on which jewellery should become a personal highlight.







Necklace: K1464BR <
Earring: O1013BR

Earring: O976BR >



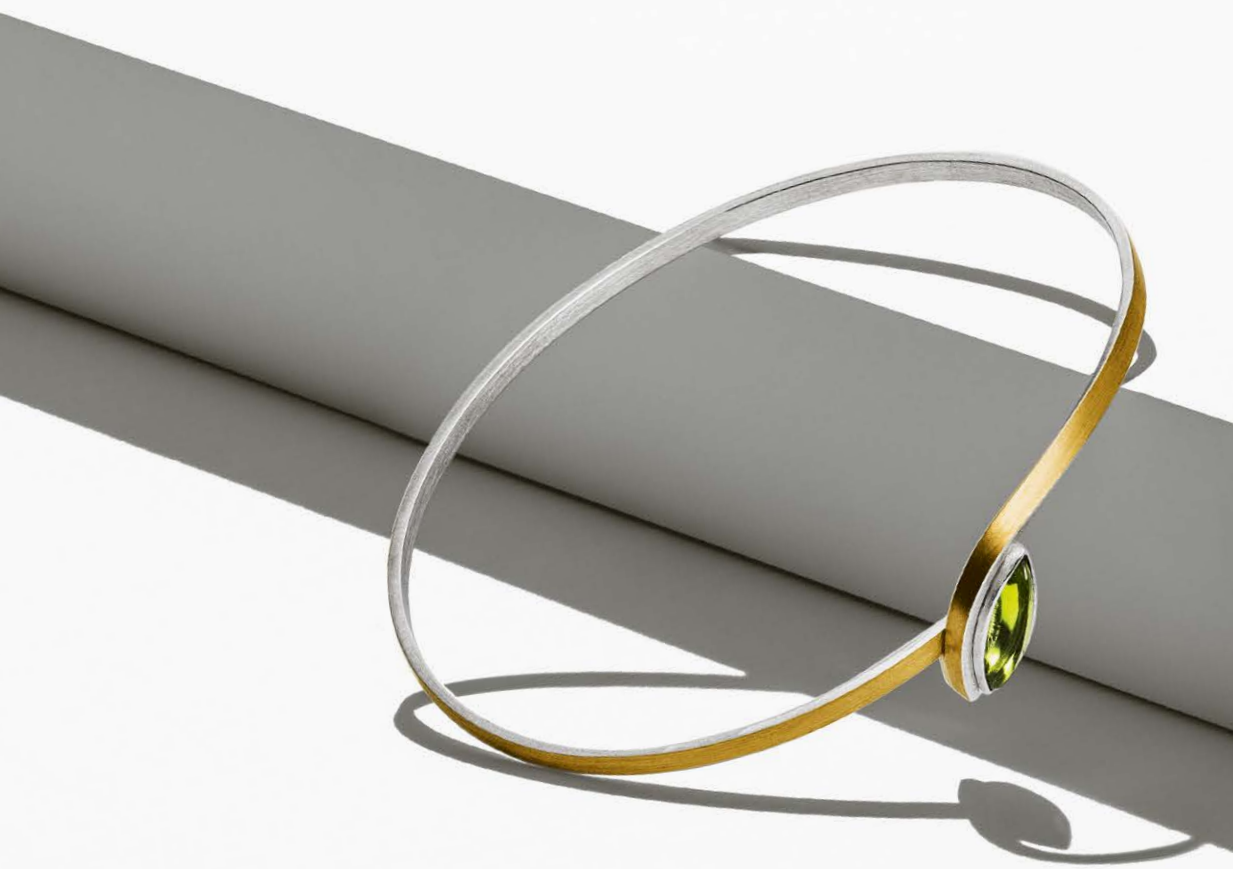


< Necklace: K1441
Earring: O993
Ring: R1355

> Rings from top:
R668BR, R900RU
and R668OP

Quiet and reserved? MANU can also be different. The playful ring designs in the collection stand out like little colourful ornaments. Each ring brings something special with its different, detailed shape and colour. The filigree companions are even more fun when they are combined with each other.





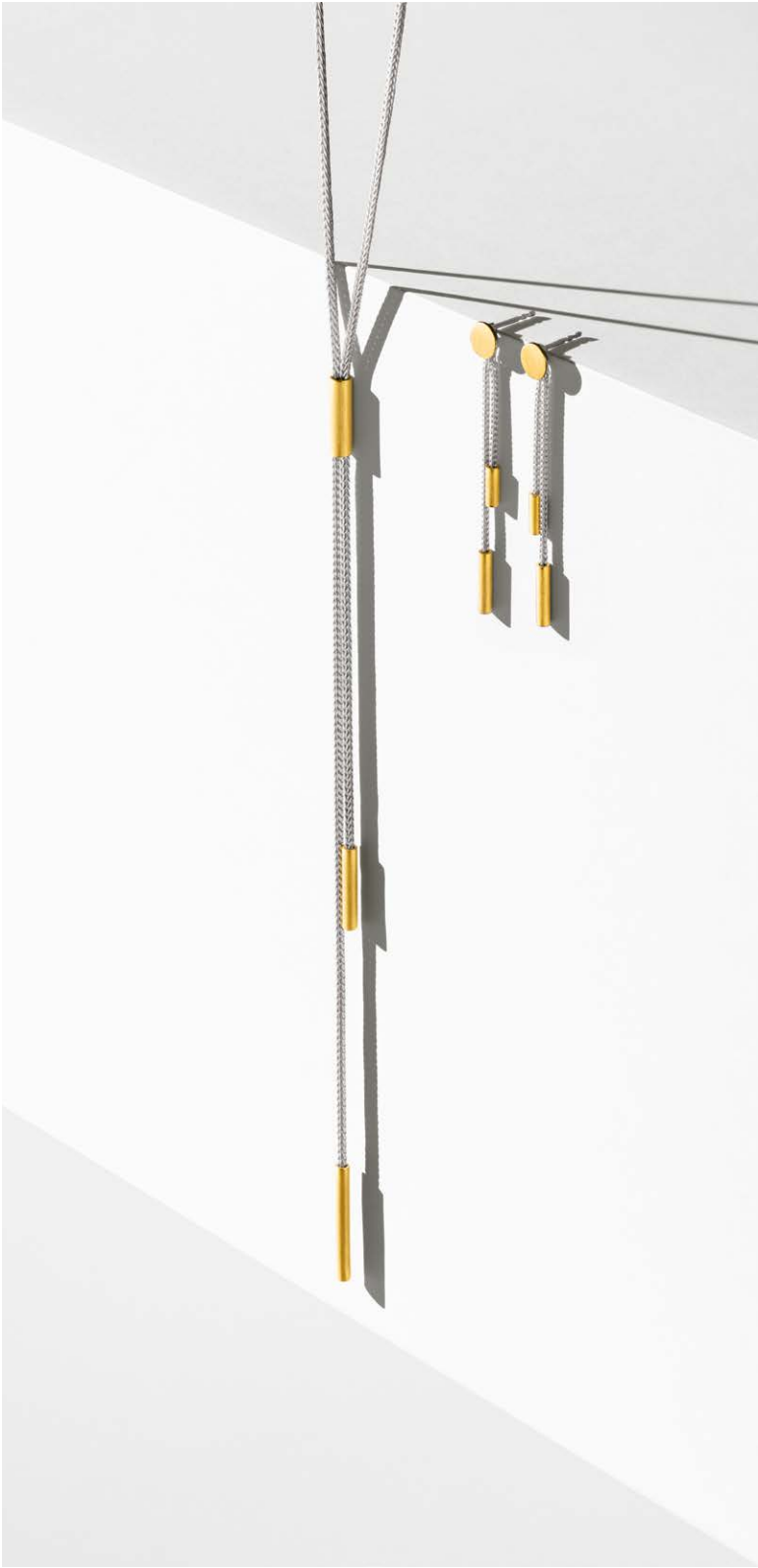
Bangles: AR109PR and AR80BR





Even though it is barely noticeable, this necklace draws the eye on every one of its 100 centimetres. The many silver hoops are gracefully interrupted by delicate gold plates. As if they had found their place among the silver by chance and yet in exactly the right place. With its lightness and variety, this understatement necklace is one of the MANU highlights.

< Necklace: K1438
> Necklace: K1410
Earring: O975



Rings from top: <
R1268, R1369BR,
R1267BR, R1362BR
and R1268BR

Earring: O988 >



Silver and gold continue to explore new forms and paths with each other in this modern jewellery series. Symmetrical lines move into the background and are replaced by loose, random-looking arrangements of silver and gold. Only upon closer look it is apparent that there is a well-thought-out idea and precise craftsmanship behind each design.





< Earring: O971STL

> Necklace: K1406SCI
Rings from top: R1310SCI and
R1310AL



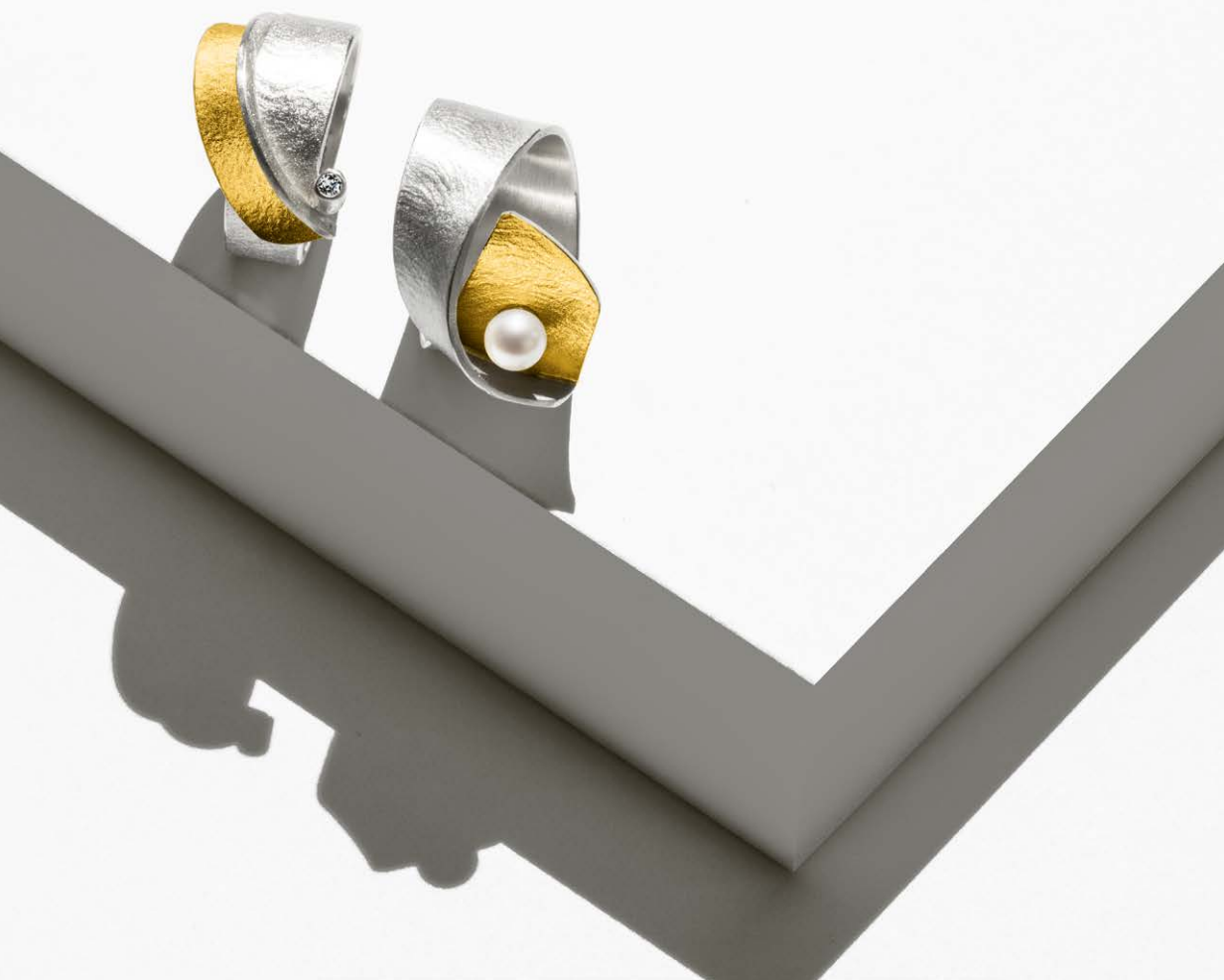
The MODERN collection also stands for trying out new things. This set draws attention to the exceptional cut of the coloured gemstones. In the 21st Century Cut, the stones do not follow a symmetrical trend. They are different. Striking. MODERN. The combination with matt surfaces and bicoloured ropes makes the coloured gemstones shine. In addition to citrine and alpine quartz, MANU also offers a choice of other quartz stones for this set.



Jewellery. Variations.

Not everyone has the same taste. That makes the world colourful and individual. People like to choose jewellery in different variations. In order to be able to decide on the one variation that you prefer, MANU offers a wide range of variations to choose from.

MANU's diamond jewellery also offers simple and affordable variations, with diamonds as a highlight, pearls as a silky alternative or the pure metal in its simplicity. In order to make the interplay of silver and gold variable, all silver elements are additionally available in a blackened version. The purer play of colour and the strong contrast allow the gold to shine. With necklaces made of black rubber or silver fox tape, MANU offers a free choice between two styles. Matt modern or shiny timeless. MANU also offers a choice of several variants for many pieces of jewellery with coloured stones.



Star. Jewellery.

Twelve constellations in the night sky, many of them visible to the naked eye. What inspired people four thousand years ago is still connected with us today. MANU puts a new spin on the star signs with twelve pendants. Star jewellery is classic and modern at the same time – it is simple yet exciting.



Necklaces: KS11 (Sagittarius)
and KS2 (Pisces)



Each of the twelve star signs is drawn on a silver base with fine gold soldering, one brilliant-cut diamond each and different textures. On two centimetres, the signs have an effect – even if you don't know the meaning. Star jewellery becomes a personal gift for others or to make yourself happy.



Aquarius

21st January – 19th February
KSKL1 (Ø 13 mm)
KS1 Diamond 0.012 ct (Ø 20 mm)



Pisces

20th February – 20th March
KSKL2 (Ø 13 mm)
KS2 Diamond 0.012 ct (Ø 20 mm)



Aries

21st March – 20th April
KSKL3 (Ø 13 mm)
KS3 Diamond 0.012 ct (Ø 20 mm)



Taurus

21st April – 20th May
KSKL4 (Ø 13 mm)
KS4 Diamond 0.012 ct (Ø 20 mm)



Gemini

21st May – 21st June
KSKL5 (Ø 13 mm)
KS5 Diamond 0.012 ct (Ø 20 mm)



Cancer

22nd June – 22nd July
KSKL6 (Ø 13 mm)
KS6 Diamond 0.012 ct (Ø 20 mm)



Leo

23rd July – 23rd August
KSKL7 (Ø 13 mm)
KS7 Diamond 0.012 ct (Ø 20 mm)



Virgo

24th August – 23rd September
KSKL8 (Ø 13 mm)
KS8 Diamond 0.012 ct (Ø 20 mm)



Libra

24th September – 23rd October
KSKL9 (Ø 13 mm)
KS9 Diamond 0.012 ct (Ø 20 mm)



Scorpio

24th October – 22nd November
KSKL10 (Ø 13 mm)
KS10 Diamond 0.012 ct (Ø 20 mm)



Sagittarius

23rd November – 21st December
KSKL11 (Ø 13 mm)
KS11 Diamond 0.012 ct (Ø 20 mm)



Capricorn

22nd December – 20th January
KSKL12 (Ø 13 mm)
KS12 Diamond 0.012 ct (Ø 20 mm)

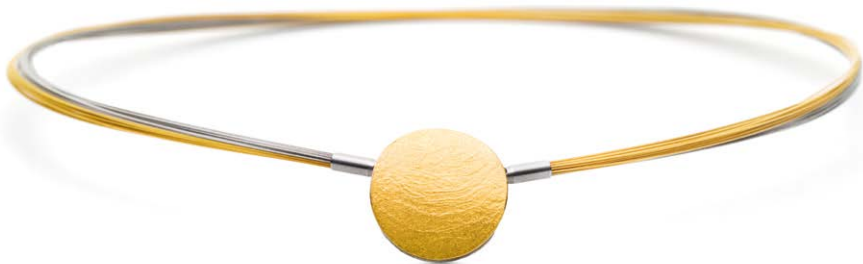




Inter. Changeable. Clasps.

With MANU's interchangeable clasp system, the chains and clasps can be combined individually. This creates pieces of jewellery with personality that can be put together differently every day. Many of the interchangeable clasps have two sides – one clasp, two pieces of jewellery. With the interchangeable clasp system, existing jewellery can be changed again and again.



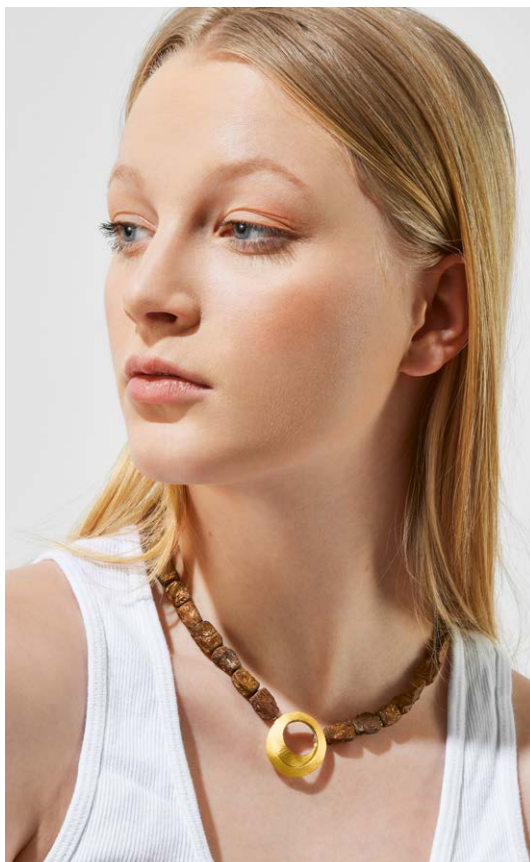


Interchangeable <
clasp: K1004
Necklace: WKB15

Interchangeable
clasp: K1398
Necklace: WK58

Interchangeable
clasp: K1448BR
Necklace: WK67

Interchangeable >
clasp: K1279
Necklace: WK36



Press, turn, open. The interchangeable clasp system works quickly and easily. The integrated bayonet mechanism concealed within the interchangeable clasp is not only invisible, but keeps the jewellery securely fastened. The collection includes more than 15 interchangeable clasps and about twice as many necklaces. Pearl or stone necklaces, metal or rubber bands, valuable necklaces with jewels or inexpensive cords. An overview of all interchangeable clasps and necklaces is offered in a special booklet, available at MANU directly or through a retailer in your area.



Straight. Forward. MANU.

MANU continuously pursues one concept: the combination of silver and gold. Combined by hand. Warm, clear and genuine. This is also reflected in the workshop environment: Johannes Weege, managing director and owner, converted a 60-year-old paper factory with his family in 2016. Today, with lots of light and a warm feeling, it invites everyone to find inspiration and develop new ideas. Clear lines and simplicity surround the goldsmiths in their work. This is where MANU has found space to live design.

The concept is to this day equally shaped by its history: in 1987, Master Goldsmith Ilse Ebert founded MANU together with her husband Horst. As the creative hub, she managed to combine design with humanity. To transcend boundaries. Always in search of something new, full of imaginative ideas and young at heart even at an advanced



“We strive to return
the trust our customers place in us
and remain simply MANU, in terms of both
craftsmanship and personal contact.
Individual and familial.”

age. The founder created her first pieces of jewellery at home, but already after a short time was able to see MANU grow – while keeping it within the family-framework.

“Genuine from the
beginning.”

Johannes Weege has been continuing this for 25 years. With his affinity for the creative process and his openness to new things, he listens to the industry, picks up on impulses from outside and, together with the designers, he brings MANU to life.





Necklace: K1447BR
Ring: R1350BR



Imprint

Editorial & Content: MANU

Conception, planning & implementation: Pixelgold

Photography: Pixelgold

Text: Franziska Zahn

Status: Autumn 2023

Print: Druckstudio GmbH, Düsseldorf

Paper: Circle Offset Premium white recycled

For current prices, please visit our website or
contact your dealer

© MANU Schmuckwerkstatt GmbH

Hameln | Germany

info@manuschmuck.de


www.manujewellery.com



Silver.
Gold.
MANU.

MANU

www.manujewellery.com

 @manu_schmuck

 @manuschmuckwerkstatt